

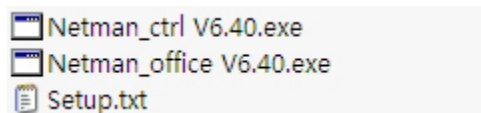
Netman Installation Guide

There are two versions for personal use: Netman Office and Netman Control. Netman office is designed to enable people to collaborate with each other. Netman Control is designed to enable people to access and control a remote PC. The installation of Netman Office and Netman Control are more or less the same.

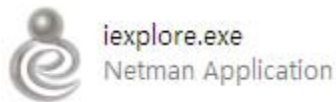
There are steps to install and adjust Netman Settings on your computer and your counterpart's computer.

Step 1. Download installation file.

[Click here and download](#) Netman Installation file on your computer. In the downloaded compressed file, there are two versions **Netman control** and **Netman office**. Choose one as you want and install. Follow the Installation Guide to complete the installation.



After the installation, open the installation directory (the default installation directory is C: /ProgramFiles/Netman or C: /ProgramFiles/Netman control) and double click "iexplore.exe".



In the opening window "Auto Startup Option", click "Yes".



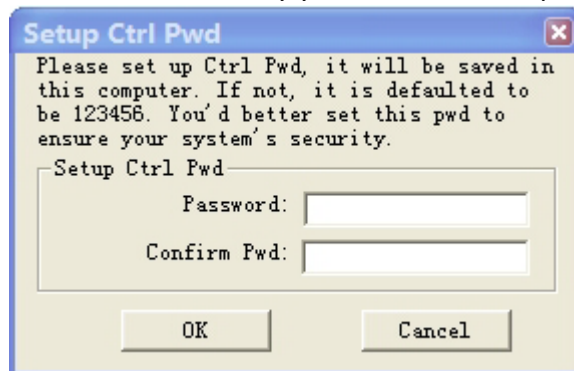
Step 2. Log into your User Account.

Press Ctrl+Y to start Netman. Click on the Member Login or Register (Sign up a User ID if you don't have one). Enter your User ID and password.



The "Member Login" dialog box has a blue title bar with a close button. The main text says "Please input your ID and login password." Below this is a checked checkbox for "Startup with Windows." There are two input fields: "ID:" and "Password:". Below the password field are two checked checkboxes: "Remember Password" and "Member Login". At the bottom are three buttons: "Reset", "OK", and "Cancel".

In the opening window "Set up Control Password", you should set up a password for the computer. When a remote computer tries to access your computer, the access must be confirmed by you or the control password for the computer.



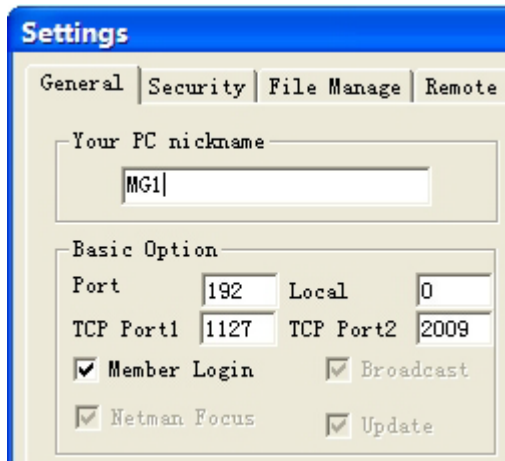
The "Setup Ctrl Pwd" dialog box has a blue title bar with a close button. The main text says "Please set up Ctrl Pwd, it will be saved in this computer. If not, it is defaulted to be 123456. You'd better set this pwd to ensure your system's security." Below this is a section titled "Setup Ctrl Pwd" containing two input fields: "Password:" and "Confirm Pwd:". At the bottom are two buttons: "OK" and "Cancel".

If you want to modify your login password or control password, click "Option" menu and then "Modify Password".

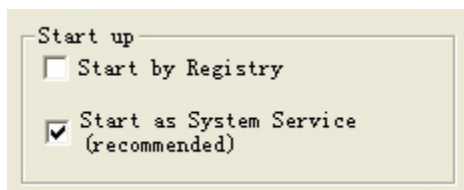
Step 3. Adjust Settings.

Click on "Settings" on the interface.

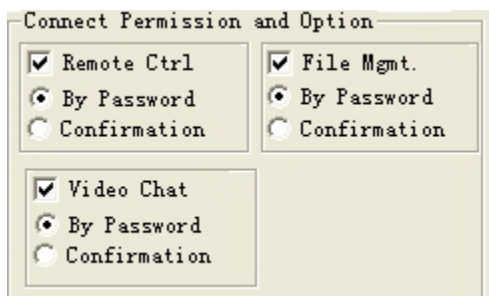
In the "General" tab, select "Member Login" and Netman will automatically log into your account when Netman starts up. The account will be combined with the PC.



In the “**Start up**” option, you can select either “Start by Registry” or “Start as System Service”. The latter is recommended. ([Click here for more information about: Difference between “Start by Registry” or “Start as System Service”](#))



In the “**Connect Permission and Option**”, you can find two options for Remote Control, File Management and Video Chat. “By password” option requires the control password of the counterpart PC when you are going to connect to the PC. “By Confirmation” option will ask for the permission from the counterpart when you are trying to connect to a computer.



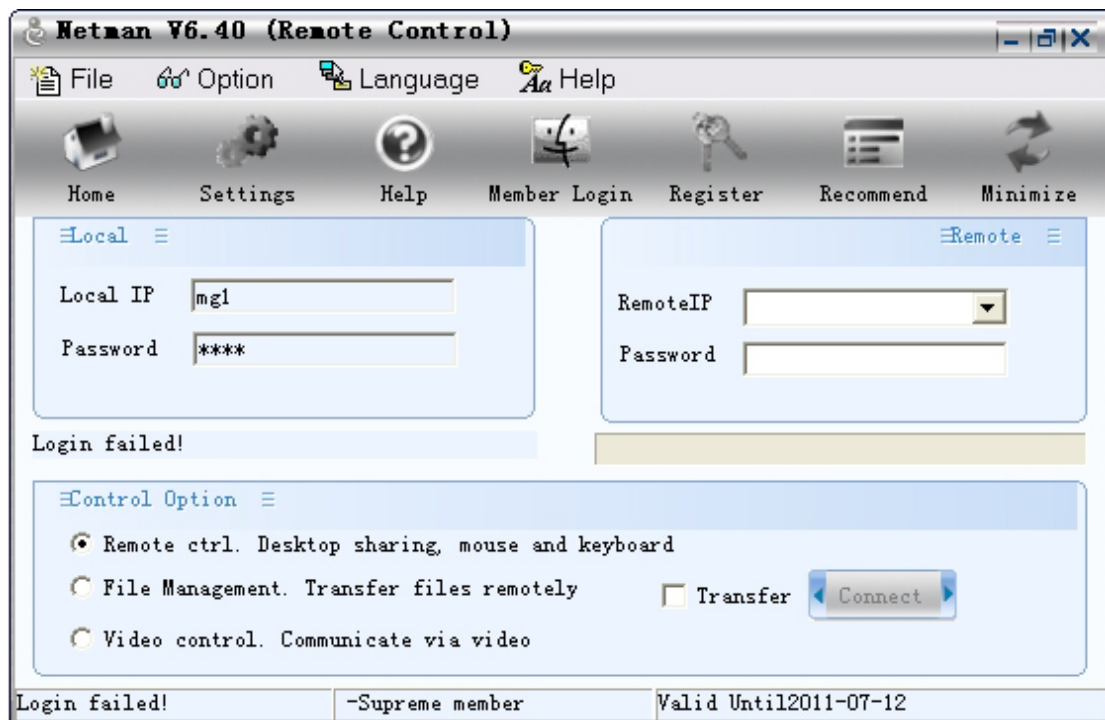
Step 4. Install Netman on a remote PC or your partner’s PC.

After the above steps are completed, you should install Netman on the controlled PC or ask your partner to install Netman on his/her computer as the first 3 steps above.

Step 5. Access a Remote PC.

To access a remote computer, you need to enter the User account of the PC. When

you enter the account remotely from another computer, you will be able to control a computer or transfer files between the two connected PCs.



If your partner doesn't have a User account, you can also ask for the IP address and use the IP address to access your partner's PC.